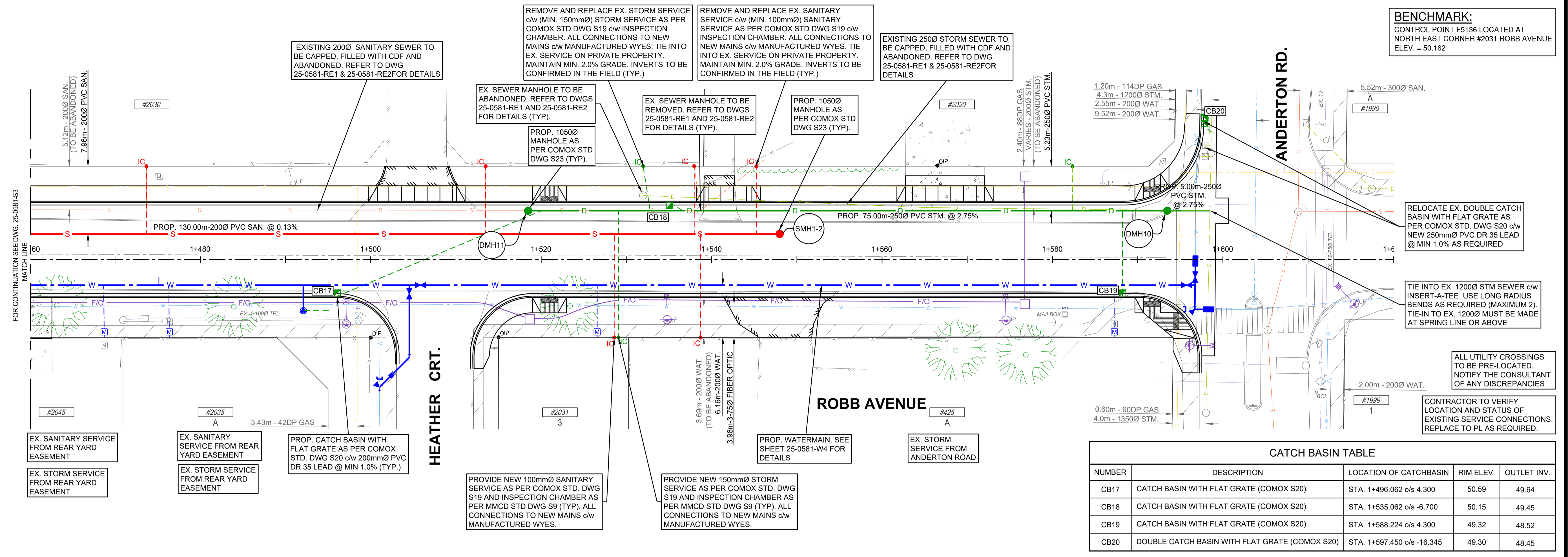
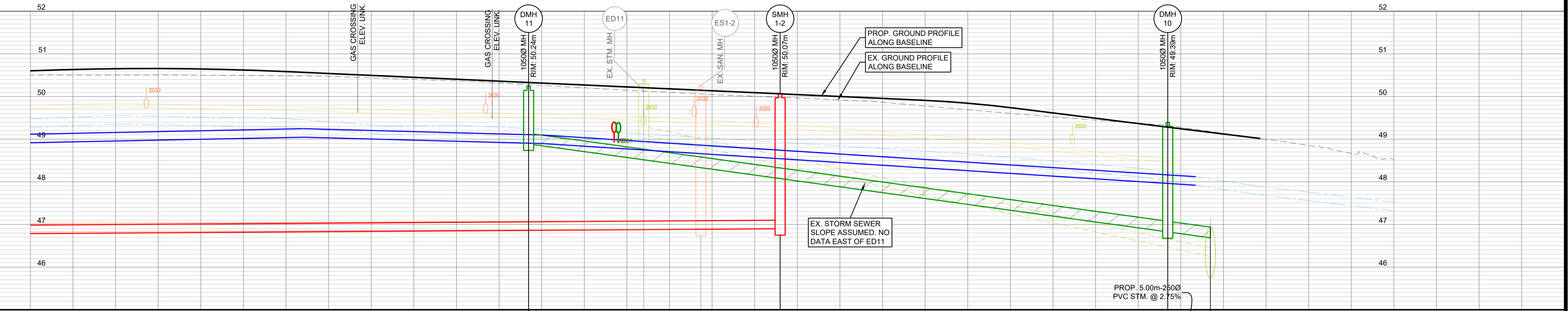


BENCHMARK:
CONTROL POINT F5136 LOCATED AT
NORTH EAST CORNER #2031 ROBB AVENUE
ELEV. = 50.162



CATCH BASIN TABLE				
NUMBER	DESCRIPTION	LOCATION OF CATCHBASIN	RIM ELEV.	OUTLET INV.
CB17	CATCH BASIN WITH FLAT GRATE (COMOX S20)	STA. 1+496.062 o/s 4.300	50.59	49.64
CB18	CATCH BASIN WITH FLAT GRATE (COMOX S20)	STA. 1+535.062 o/s -6.700	50.15	49.45
CB19	CATCH BASIN WITH FLAT GRATE (COMOX S20)	STA. 1+588.224 o/s 4.300	49.32	48.52
CB20	DOUBLE CATCH BASIN WITH FLAT GRATE (COMOX S20)	STA. 1+597.450 o/s -16.345	49.30	48.45

UTILITY TRENCH AS PER MMCD STD DWG G4



PROP. STORM SEWER	48.887 E	49.100 E	46.899 W	46.825 W	46.687 W			
EX. STORM SEWER				45.737 S	45.737 N			
PROP. SAN SEWER			46.899 W					
EX. SAN SEWER								
STATION	1+460	1+480	1+500	1+520	1+540	1+560	1+580	1+600

ISSUED FOR CONSTRUCTION

No.	DATE	REVISION	BY
A	2026-06-30	ISSUED FOR CONSTRUCTION	NP

BINNIE
The people behind your infrastructure.

R.F. BINNIE & ASSOCIATES LTD.
300 - 4940 Canada Way,
Burnaby, BC V5G 4K6
TEL 604 420 1721
BINNIE.com

CLIENT: **TOWN OF COMOX**
1809 Beaufort Avenue, Comox BC, V9M 1R9

DRAWING DESCRIPTION: **ROBB AVENUE UPGRADES
STA 1+460 - STA 1+620
SEWER**

SURVEYED BY: DB/SE
DRAWN BY: KFB
DESIGNED BY: NP
CHECKED BY: GK

SCALES
H 1:250 10m
V 1:50 2m

R.F. Binnie & Associates Ltd.
EGBC Permit No. 1001128
2026-06-30
EGBC PERMIT No. 1001128

DATE: 2026-03-13
DRAWING No.: **25-0581-S4**
SHEET 13 OF 29
REV. A
DESTROY ALL PRINTS BEARING PREVIOUS No.

PLOTTED: 2026-06-30 10:26:46 AM BY: C:\CONTRIBUTOR\LAST SAVED BY: C:\CONTRIBUTOR
 PLOT: 2026-06-30 10:26:46 AM BY: C:\CONTRIBUTOR\LAST SAVED BY: C:\CONTRIBUTOR