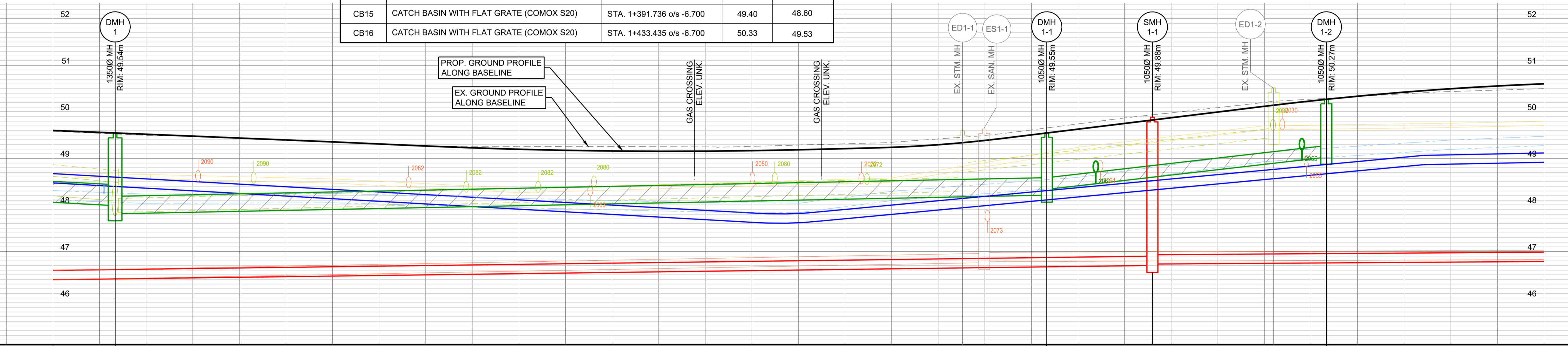


BENCHMARK:
CONTROL POINT F5136 LOCATED AT NORTH EAST CORNER #2031 ROBB AVENUE ELEV. = 50.162

CATCH BASIN TABLE

NUMBER	DESCRIPTION	LOCATION OF CATCHBASIN	RIM ELEV.	OUTLET INV.
CB12	CATCH BASIN WITH COMBINED INLET (COMOX S21)	STA. 1+340.000 o/s -6.700	49.13	48.33
CB13	CATCH BASIN WITH COMBINED INLET (COMOX S21)	STA. 1+356.062 o/s 4.300	49.08	48.28
CB14	CATCH BASIN WITH FLAT GRATE (COMOX S20)	STA. 1+387.962 o/s 4.300	49.14	48.34
CB15	CATCH BASIN WITH FLAT GRATE (COMOX S20)	STA. 1+391.736 o/s -6.700	49.40	48.60
CB16	CATCH BASIN WITH FLAT GRATE (COMOX S20)	STA. 1+433.435 o/s -6.700	50.33	49.53



PROP. STORM SEWER	PROP. 100.00m-450Ø PVC STM. @ 1.07%	47.085 W 47.830 E	PROP. 100.00m-375Ø PVC DR35 STM. @ -0.40%	48.210 W 48.335 E	PROP. 30.00m-250Ø PVC DR35 STM. @ -2.30%	49.025 W
EX. STORM SEWER	EX. STM. TO BE ABANDONED	47.761 N 47.761 S	EX. 300Ø STM. @ 0.49% (TO BE ABANDONED)	48.200 W 48.700 E	EX. 200Ø STM. @ 2.25% (TO BE ABANDONED)	49.450 W
PROP. SAN SEWER	PROP. 120.00m-200Ø PVC DR35 SAN. @ 0.26%					
EX. SAN SEWER	EX. 200Ø SAN. @ 2.64% (TO BE ABANDONED)		EX. 200Ø SAN. @ 0.36% (TO BE ABANDONED)	46.700 W 46.730 E	EX. 200Ø SAN. @ 0.08% (TO BE ABANDONED)	
STATION	1+300	1+306.670	1+320	1+360	1+380	1+400

No.	DATE	REVISION	BY
A	2026-06-30	ISSUED FOR CONSTRUCTION	NP

BINNIE
The people behind your infrastructure.

R.F. BINNIE & ASSOCIATES LTD.
300 - 4940 Canada Way,
Burnaby, BC V5G 4K6
TEL 604 420 1721
BINNIE.com

CLIENT
TOWN OF COMOX
1809 Beaufort Avenue, Comox BC, V9M 1R9

DRAWING DESCRIPTION
ROBB AVENUE UPGRADES
STA 1+300 - STA 1+460
SEWER

SURVEYED BY DB/SE
DRAWN BY KFB
DESIGNED BY NP
CHECKED BY GK

SCALES
H 1:250 10m
V 1:50 2m

ISSUED FOR CONSTRUCTION

DATE 2026-03-13
DRAWING No. 25-0581-S3

SHEET 12 **OF** 29 **REV.** A

DESTROY ALL PRINTS BEARING PREVIOUS No.

PLT 2026-06-30 09:29:10 1:250 30 P4 BY: R.F. BINNIE & ASSOCIATES LTD. LAST SAVED BY: COORDINATOR
 P:\2025\25-0581-S3\25-0581-S3-01.dwg PLOT DATE: 2026-06-30 09:29:10 1:250 30 P4 BY: R.F. BINNIE & ASSOCIATES LTD.