

# TOWN OF COMOX

## WHAT IS A REGULATED TREE?

Town of Comox Tree Protection Bylaw No. 2063



### A REGULATED TREE IS ANY OF THE FOLLOWING:

#### 1 Trees with a DBH of 20 cm or more

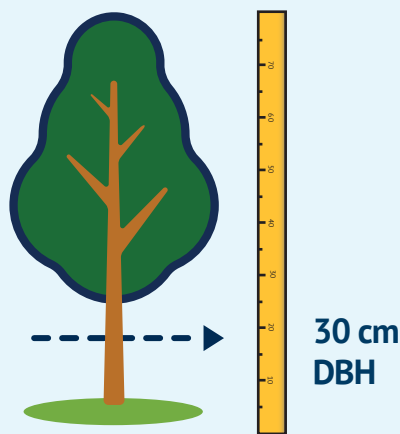
**Priority Species** are regulated once the trunk diameter reaches 20 cm DBH.

- Douglas-fir
- Pacific yew
- Western redcedar
- Seaside juniper
- Western hemlock
- Arbutus
- Grand fir
- Garry oak
- Sitka spruce
- Bigleaf maple
- Western white pine
- Trembling aspen
- Shore pine



#### 2 Trees with a DBH of 30 cm or more

**Trees other than Priority Species** are regulated once the trunk diameter reaches 30 cm DBH.



#### 3 Trees with a DBH of 50 cm or more

Trees are considered **Protected Trees** once the trunk diameter reaches 50 cm DBH. Other classes of **Protected Trees** are:



Trees on land owned or managed by the Town



Trees planted or retained as a permit or approval condition

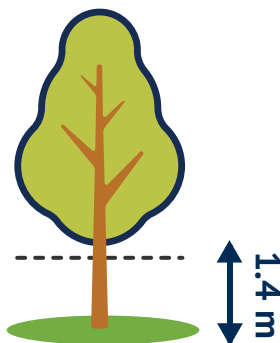


Covenant trees, replacement trees, or retained trees



#### WHAT IS DBH?

DBH means diameter at breast height, measured 1.4 m above the ground.



#### REMINDER

If you are not sure whether a tree is regulated, contact the Town before doing work.



[parcs@comox.ca](mailto:parcs@comox.ca)  
(250) 339-2421



This graphic is a summary only. Refer to the Town of Comox Tree Protection Bylaw No. 2063 for full requirements.



TOWN OF  
**COMOX**



# TOWN OF COMOX

## REPLACEMENT TREES & TREE CREDITS

Town of Comox Tree Protection Bylaw No. 2063



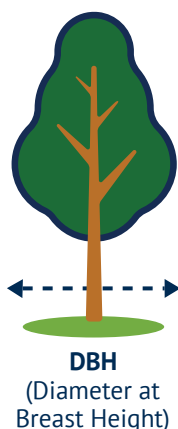
**WHEN A REGULATED TREE IS CUT OR REMOVED, THE TOWN MAY REQUIRE REPLACEMENT TREES, RETAINED TREE CREDITS, OR CASH-IN-LIEU.**

### 1 Replacement trees required



The number of replacement trees is based on the diameter of the cut or removed tree.

Diameter of cut or removed tree (DBH)	Replacement trees required
19 cm and smaller	1
20 - 59 cm	2
60 - 69 cm	3
70 - 79 cm	4
80 - 89 cm	6
90 - 99 cm	8
100 cm and larger	10



### 2 Retained tree credits



1 retained tree = 1 fewer replacement tree



Replacement requirement can be reduced to 0



No carry-forward of unused credits



No reduction if more than 10 regulated trees are or have been removed within 2 years



A retained tree is a Regulated Tree kept on the lot and designated in the Tree Permit.

### 3 Planting requirements



Replacement trees must be planted on the lot



Replacement trees must be selected from the Town's acceptable species list



If 1, 2 or 3 trees are required, at least 1 must be a medium or large canopy tree species



If 4 or more trees are required, at least 25% must be large canopy species



If the removed tree was a Priority Species, 1 replacement tree or half of the total requirement, whichever is more, must also be a Priority Species



Minimum stock: conifers 1.4 m tall; deciduous trees 4 cm caliper

### 4 Cash-in-lieu



The Town may accept cash-in-lieu instead of planting replacement trees



For development applications, this is considered only where there is not enough growing space on the lot



For valid emergency removals, the replacement requirement and any associated cash-in-lieu amount are waived



Funds go to a Town reserve fund for tree planting and maintenance



Town-owned trees may be charged at their appraised value when it exceeds the cash-in-lieu rate.



This graphic is a summary only. Refer to the Town of Comox Tree Protection Bylaw No. 2063 for full requirements.



TOWN OF  
**COMOX**



# TOWN OF COMOX TREE BYLAW FLOW CHART

*Town of Comox Tree Protection Bylaw No. 2063*

## KEY DEFINITIONS

DBH = diameter at breast height, measured 1.4 m above the ground.

### Regulated Tree

- A Priority Species with DBH of 20 cm or more, including:
  - Douglas-fir
  - western redcedar
  - western hemlock
  - grand fir
  - Sitka spruce
  - western white pine
  - shore pine
  - Pacific yew
  - seaside juniper
  - arbutus
  - Garry oak
  - bigleaf maple
  - trembling aspen
- Any other tree with DBH of 30 cm or more
- Any Protected Tree

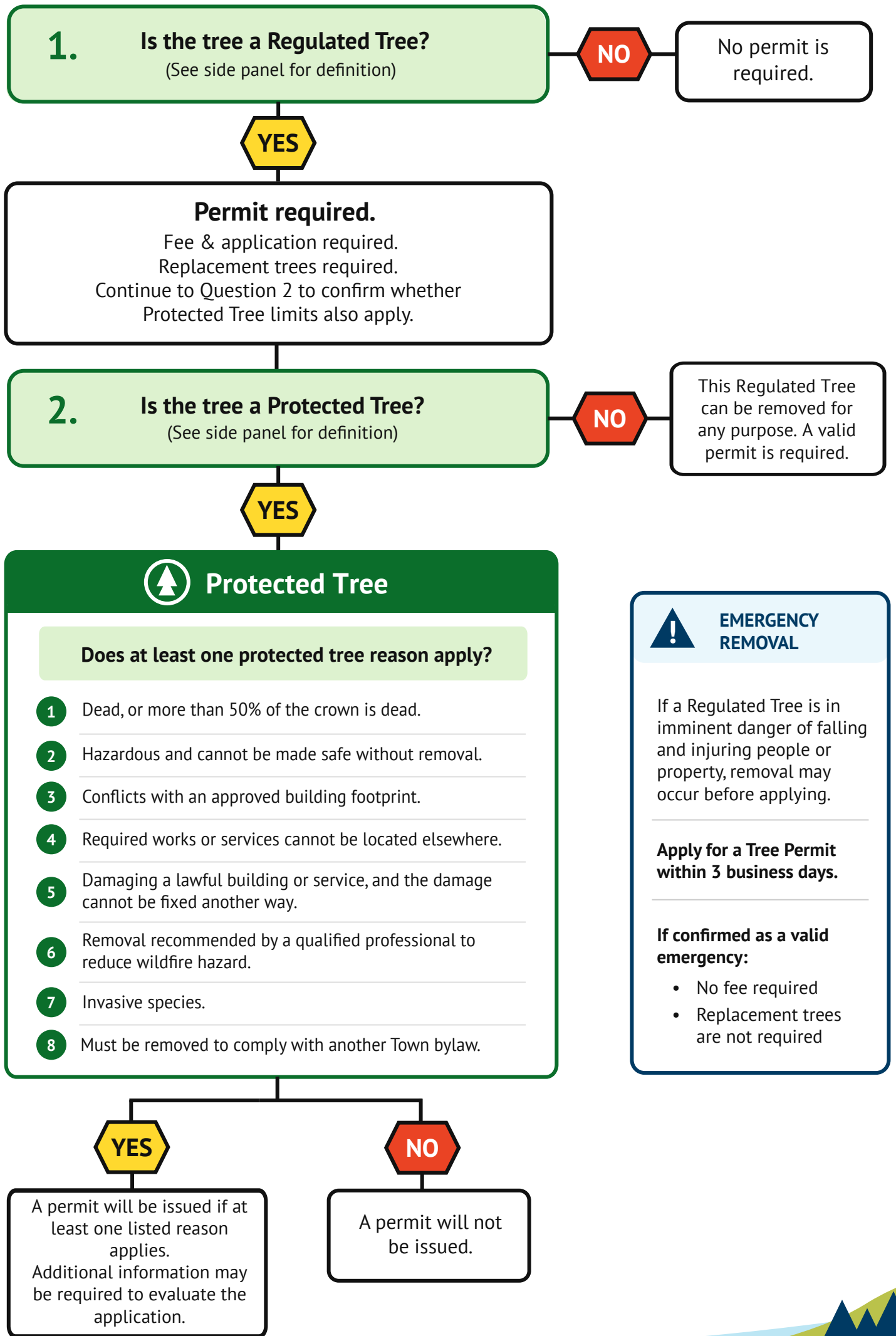
### Protected Tree

- Any tree with a DBH of 50 cm or more
- Any tree on land owned or managed by the Town
- Any tree planted or retained as a permit or approval condition
- Any covenant tree, replacement tree, or retained tree

### Replacement Tree Guide

DBH (cm)	Replacement Trees
19 cm and smaller	1
20 to 59 cm	2
60 to 69 cm	3
70 to 79 cm	4
80 to 89 cm	6
90 to 99 cm	8
100 cm and larger	10

Replacement requirements are approved by the Parks Manager.



TOWN OF  
**COMOX**

