

BENCHMARK:
CONTROL POINT F5136 LOCATED AT
NORTH EAST CORNER #2031 ROBB AVENUE
ELEV. = 50.162

RELOCATE EX. DOUBLE CATCH
BASIN WITH FLAT GRATE AS
PER COMOX STD. DWG S20 c/w
NEW 250mmØ PVC DR 35 LEAD
@ MIN 1.0% AS REQUIRED

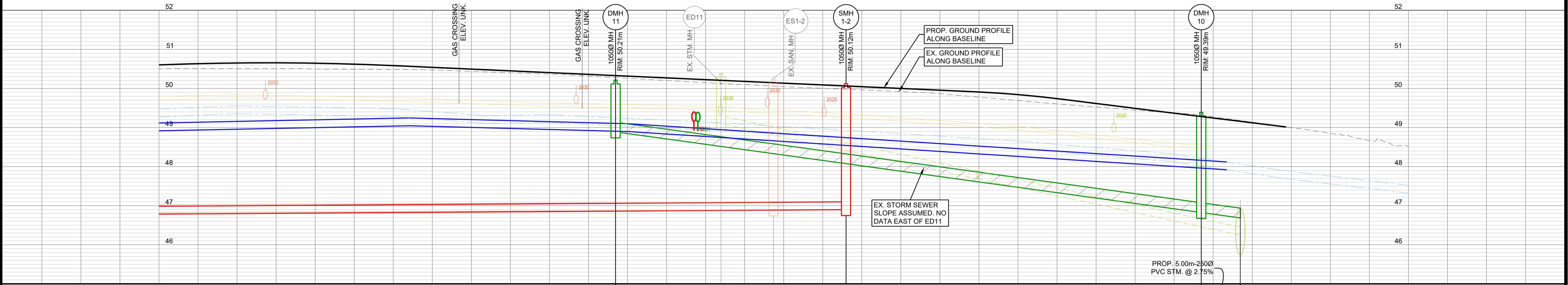
TIE INTO EX. 1200Ø STM SEWER c/w
INSERT-A-TEE. USE LONG RADIUS
BENDS AS REQUIRED (MAXIMUM 2).
TIE-IN TO EX. 1200Ø MUST BE MADE
AT SPRING LINE OR ABOVE

ALL UTILITY CROSSINGS
TO BE PRE-LOCATED.
NOTIFY THE CONSULTANT
OF ANY DISCREPANCIES

CONTRACTOR TO VERIFY
LOCATION AND STATUS OF
EXISTING SERVICE CONNECTIONS.
REPLACE TO PL AS REQUIRED.

CATCH BASIN TABLE				
NUMBER	DESCRIPTION	LOCATION OF CATCHBASIN	RIM ELEV.	OUTLET INV.
CB17	CATCH BASIN WITH FLAT GRATE (COMOX S20)	STA. 1+496.062 o/s 4.300	50.44	49.64
CB18	CATCH BASIN WITH FLAT GRATE (COMOX S20)	STA. 1+535.062 o/s -6.700	50.25	49.45
CB19	CATCH BASIN WITH FLAT GRATE (COMOX S20)	STA. 1+588.224 o/s 4.300	49.32	48.52
CB20	DOUBLE CATCH BASIN WITH FLAT GRATE (COMOX S20)	STA. 1+597.450 o/s -16.345	49.30	48.45

UTILITY TRENCH AS
PER MMCD STD DWG G4



PROP. STORM SEWER	48.887 E	PROP. 75.00m-250Ø PVC DR35 STM. @ 2.75%	46.687 W
EX. STORM SEWER	49.100 E	EX. 200Ø STM. @ 4.30% (TO BE REMOVED)	45.737 N 46.249 S
PROP. SAN SEWER	46.899 W	PROP. 130.00m-200Ø PVC DR35 SAN. @ 0.13%	46.825 E
EX. SAN SEWER	46.890 W	EX. 200Ø SAN. @ 0.08% (TO BE ABANDONED)	46.825 E
STATION	1+460	1+480	1+500
	1+518.468	1+520	1+538.680
	1+540	1+547.982	1+560
	1+593.468	1+600	1+620

ADDENDUM #2

No.	DATE	REVISION	BY
4	2026-05-25	ADDENDUM #2	NP
3	2026-05-08	ISSUED FOR TENDER	NP
2	2026-04-24	95% DESIGN SUBMISSION	NP
1	2026-03-27	50% SUBMISSION	NP



R.F. BINNIE & ASSOCIATES LTD.
300 - 4940 Canada Way,
Burnaby, BC V5G 4K6
TEL 604 420 1721
BINNIE.com

CLIENT
TOWN OF COMOX
1809 Beaufort Avenue, Comox BC, V9M 1R9

DRAWING DESCRIPTION
**ROBB AVENUE UPGRADES
STA 1+460 - STA 1+620
SEWER**

SURVEYED BY DB/SE
DRAWN BY KFB
DESIGNED BY NP
CHECKED BY GK

SCALES
H 1:250 10m
V 1:50 2m



DATE 2026-03-13
DRAWING No.
25-0581-S4

SHEET 13 OF 29 REV. 4
DESTROY ALL PRINTS BEARING PREVIOUS No.

PLOTTED: 2026-05-26 12:31:38 PM BY: J. L. LAST, LAST, PLANNING & DESIGN INC. (LTD.)
 PLOT: 2026-05-26 12:31:38 PM BY: J. L. LAST, LAST, PLANNING & DESIGN INC. (LTD.)