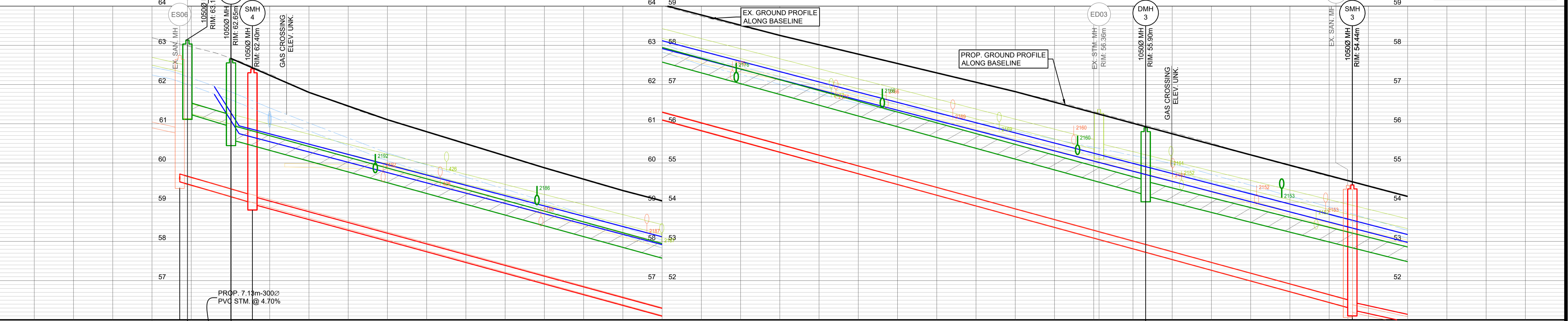


CATCH BASIN TABLE

NUMBER	DESCRIPTION	LOCATION OF CATCHBASIN	RIM ELEV.	OUTLET INV.
CB01	CATCH BASIN WITH FLAT GRATE (COMOX S20)	STA. 1+026.753 o/s -6.700	60.00	59.20
CB02	CATCH BASIN WITH FLAT GRATE (COMOX S20)	STA. 1+067.034 o/s -6.700	57.78	56.98
CB03	CATCH BASIN WITH FLAT GRATE (COMOX S20)	STA. 1+115.000 o/s 4.300	55.74	56.94
CB04	CATCH BASIN WITH FLAT GRATE (COMOX S20)	STA. 1+115.000 o/s -6.700	55.34	54.54



PROP. STORM SEWER	PROP. 116.50m-375Ø PVC DR35 STM. @ 5.50%	PROP. 100.00m-375Ø PVC DR35 STM. @ 5.03%
EX. STORM SEWER	EX. 200Ø STM. @ 4.51%	EX. 250Ø STM. @ 4.89% (TO BE ABANDONED)
PROP. SAN SEWER	PROP. 140.00m-200Ø PVC DR35 SAN. @ 5.48%	PROP. 83.00m-200Ø PVC DR35 SAN. @ 4.40%
EX. SAN SEWER	EX. 150Ø SAN @ 4.38% (TO BE ABANDONED)	EX. 200Ø SAN. @ 4.31% (TO BE ABANDONED)
STATION	0+960, 0+983.535, 0+992.318, 0+990.074, 0+992.797, 1+000, 1+020, 1+040, 1+060, 1+080, 1+100, 1+100.800, 1+106.618, 1+120, 1+139.385, 1+139.954, 1+140	1+140

No.	DATE	REVISION	BY
4	2026-05-25	ADDENDUM #2	NP
3	2026-05-08	ISSUED FOR TENDER	NP
2	2026-04-24	95% DESIGN SUBMISSION	NP
1	2026-03-27	50% SUBMISSION	NP

R.F. BINNIE & ASSOCIATES LTD.
300 - 4940 Canada Way,
Burnaby, BC V5G 4K6
TEL 604 420 1721
BINNIE.com

The people behind your infrastructure.

CLIENT
TOWN OF COMOX
1809 Beaufort Avenue, Comox BC, V9M 1R9

DRAWING DESCRIPTION
ROBB AVENUE UPGRADES
STA 1+000 - STA 1+140
SEWER

SURVEYED BY DB/SE
DRAWN BY KFB
DESIGNED BY NP
CHECKED BY GK

SCALES
H 1:250 10m
V 1:50 2m

EGBC PERMIT No. 1001128

DATE 2026-03-13
DRAWING No. 25-0581-S1
SHEET 10 OF 29
REV. 4
DESTROY ALL PRINTS BEARING PREVIOUS No.

P:\PROJECTS\25-0581-S1\25-0581-S1.dwg, 13:20:06, 06/05/2026, R.F. BINNIE & ASSOCIATES LTD.
 P:\PROJECTS\25-0581-S1\25-0581-S1.dwg, 13:20:06, 06/05/2026, R.F. BINNIE & ASSOCIATES LTD.