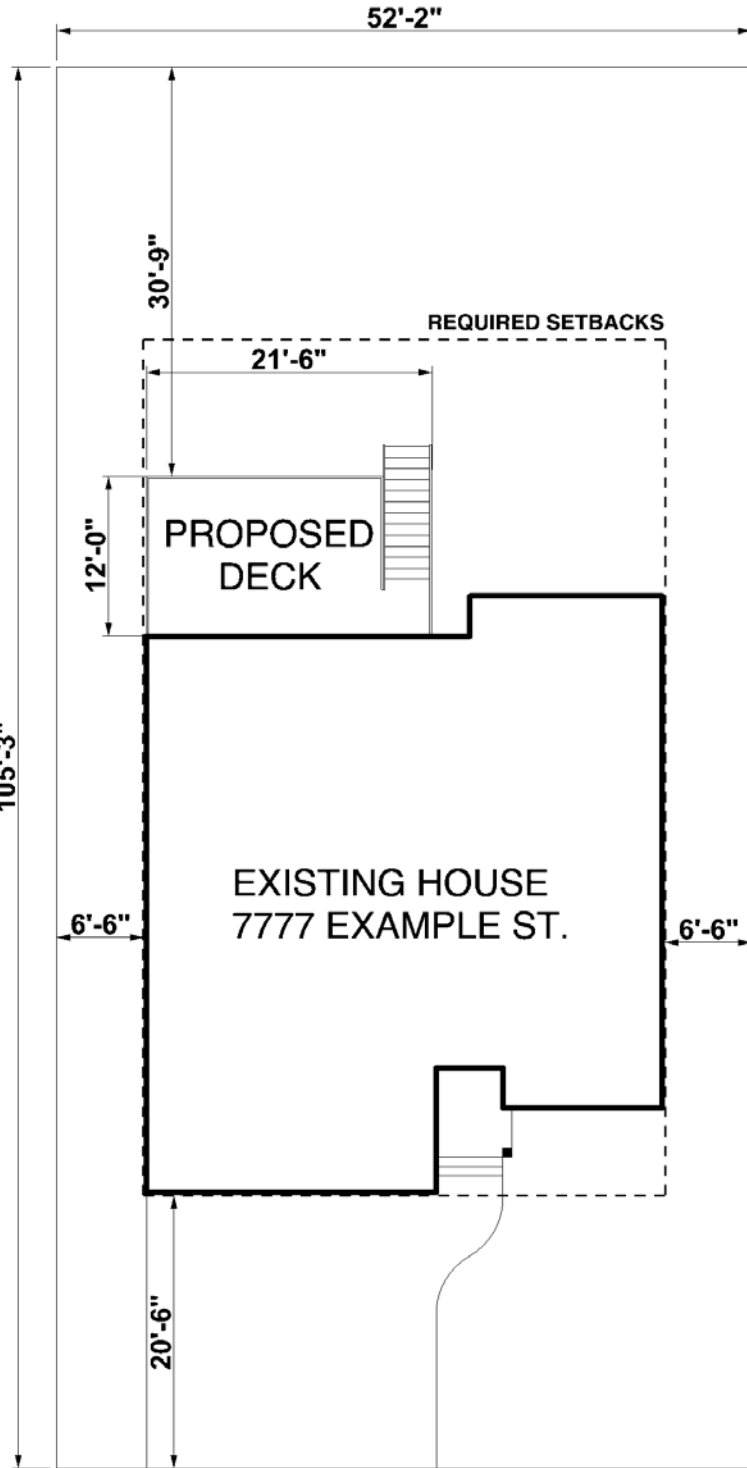




Building Inspections

Example Plans: Deck Addition to a Single-Family Dwelling Unit

Note: Actual plans should be drawn on minimum
11x17" paper. Plans must not be drawn on
graph or lined paper.



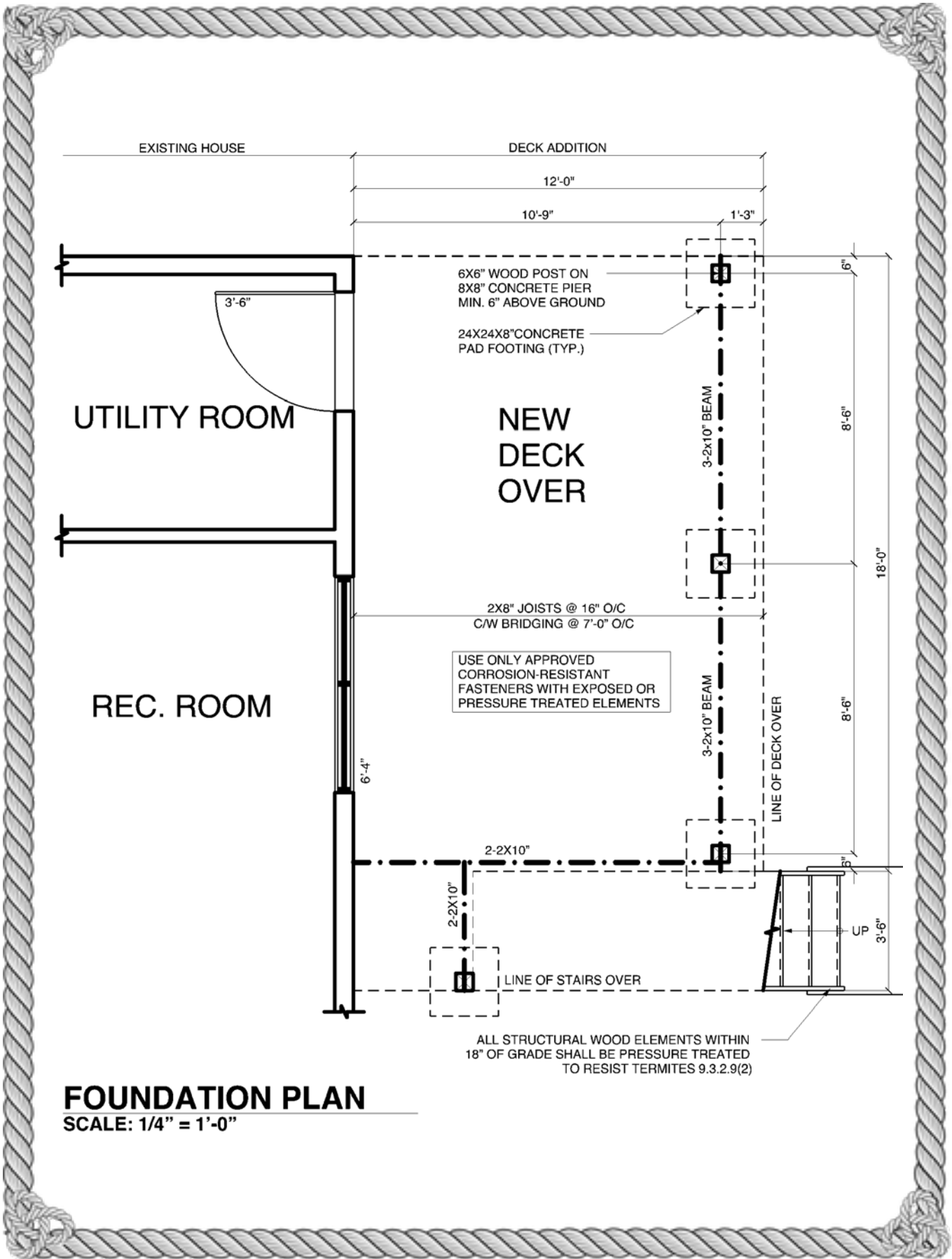
EXAMPLE STREET

SITE PLAN

SCALE: 1/16" = 1'-0"

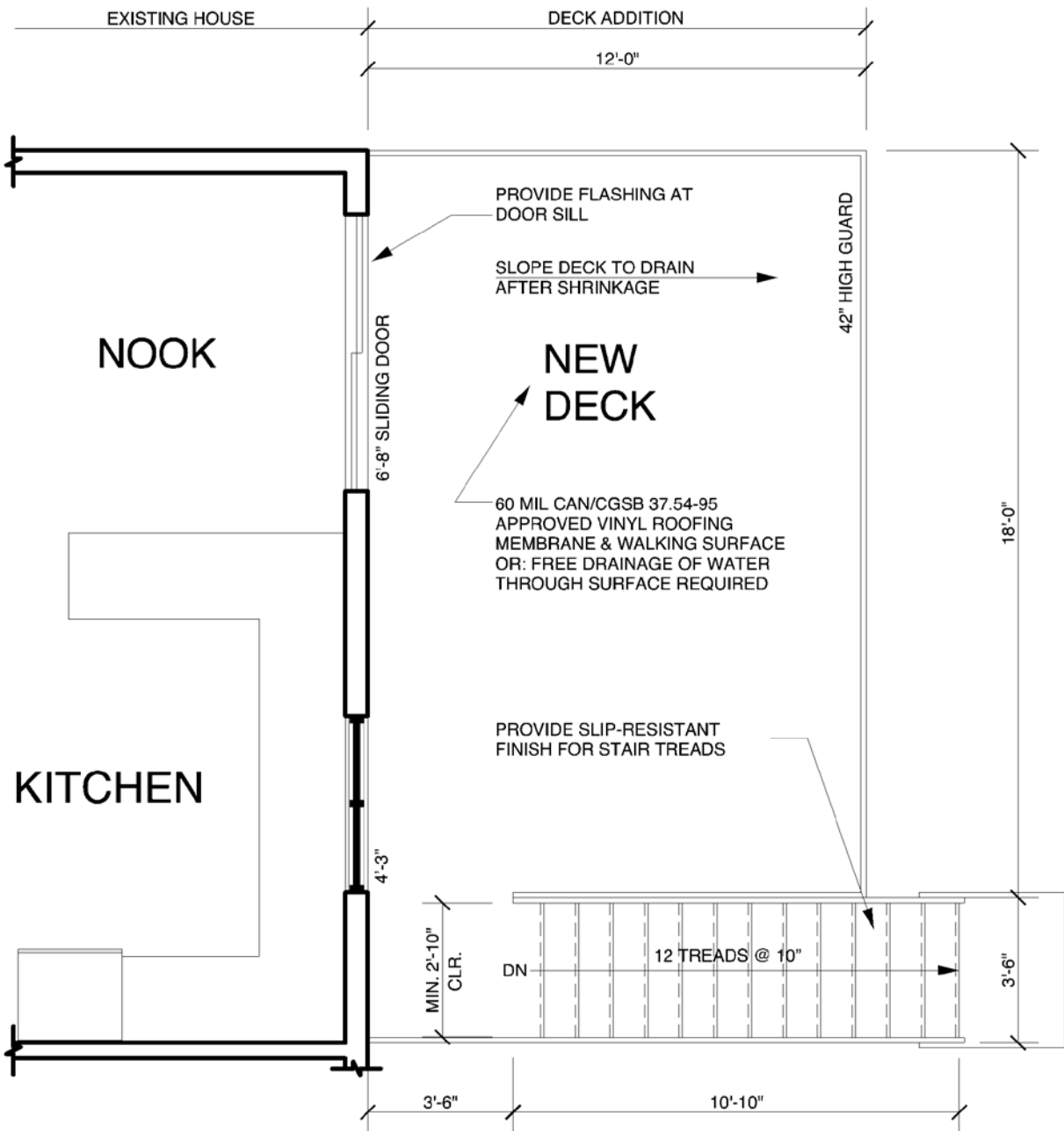
LOT SIZE:

LOT COVERAGE:



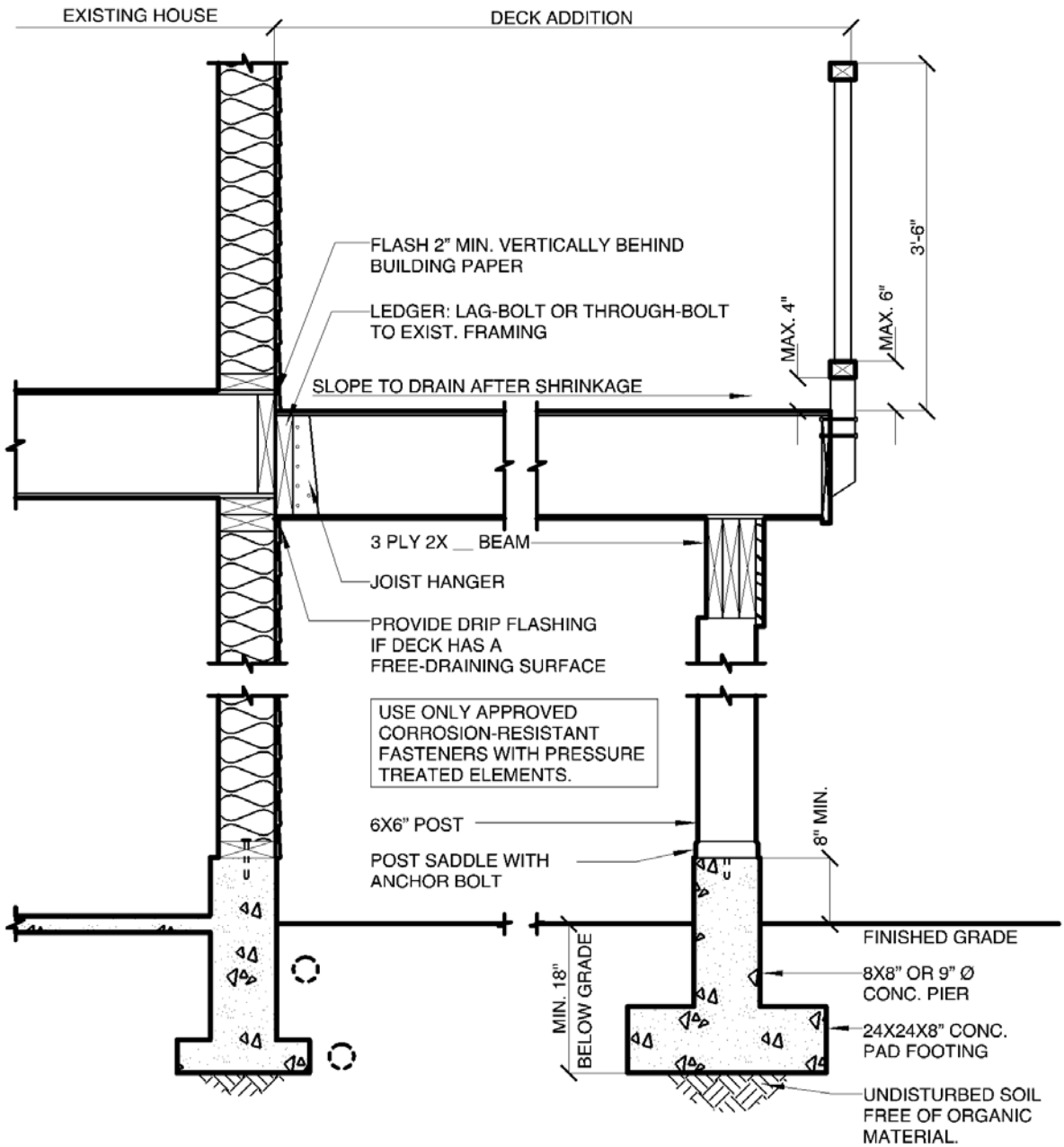
FOUNDATION PLAN

SCALE: 1/4" = 1'-0"



FLOOR PLAN

SCALE: 1/4" = 1'-0"



CROSS SECTION

SCALE: 1/2" = 1'-0"